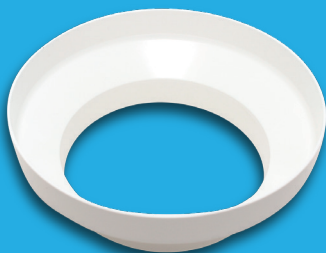


Reducer



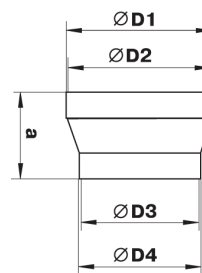
Reducer

Application

- Reduces/increases duct size when installed in flexible duct.
- Connection of various air ducts.

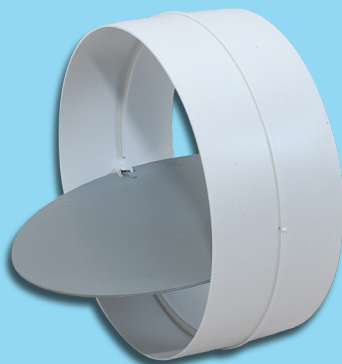
Design

- Made of white plastic.
- Connecting diameters: 100-125, 125-150, 150-200 mm.



| ESC Code | a | D | D1 | D2 | D3 | D4 |
|----------|----|---|-----|-----|-----|-----|
| VR100125 | 60 | - | 129 | 125 | 96 | 100 |
| VR125150 | 60 | - | 154 | 150 | 121 | 125 |
| VR150200 | 71 | - | 204 | 200 | 146 | 150 |

Backdraft Damper



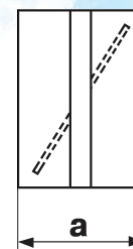
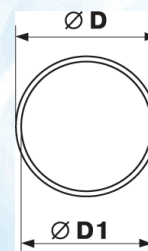
Backdraft Damper

Application

- Supply and exhaust ventilation of various premises.
- Connection of same diameter air ducts.

Design

- Made of white plastic.
- Equipped with a backdraft damper for back flow prevention.
- Designed for direct installation into air duct and equipped with a lock ring.
- Connecting diameters: 100, 125 & 150mm.



| ESC Code | a | D | D1 |
|----------|----|-----|-----|
| VBD100 | 62 | 96 | 100 |
| VBD125 | 62 | 123 | 125 |
| VBD150 | 62 | 148 | 150 |

Duct Connector



Duct Connector

Application

- Supply and exhaust ventilation of various premises.
- Connection of flexible round ducts.

Design

- Made of white PVC.
- Cover the connector with air duct and fix it with clamps.
- Connecting diameters: 100, 125 & 150mm.

| ESC Code | a | D | D1 |
|----------|----|-----|-----|
| VDC100 | 60 | 100 | 103 |
| VDC125 | 60 | 125 | 128 |
| VDC150 | 60 | 150 | 153 |

LED Lamp



LED Lamp

Application

- Low voltage lighting for bathroom wet zones.
- Xstar lamp replacement.

Design

- 4 Chips.
- 5 Watt lamp.
- 12V, 6400K.
- Cool White/Warm White.

ESC Code:

KMR165W - Cool White

KMR165WWW - Warm White